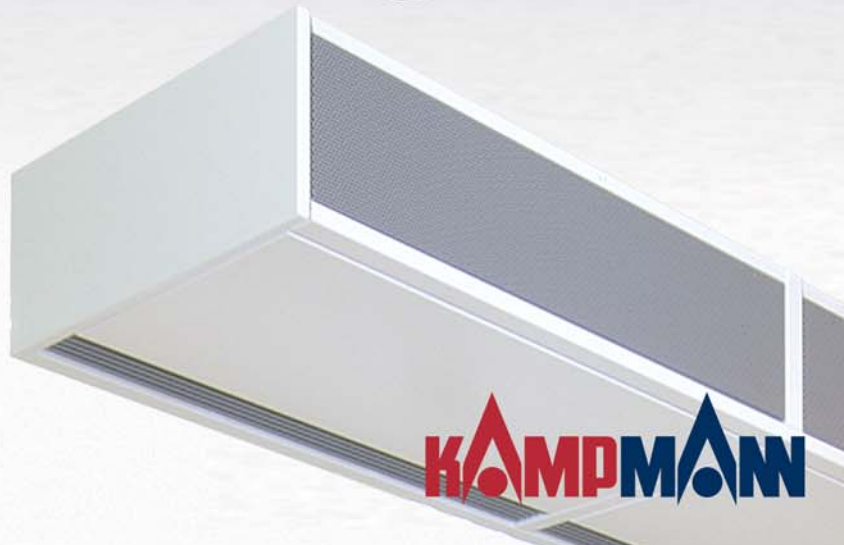


KAMPMAN

AVAILABLE EX-STOCK

Ultra • TIP • TOP • UniLine



KAMPMAN

Ultra

- the "ultimate" in air conditioning - now available ex-stock from your specialist wholesaler

With the development of its Ultra, Kampmann has always raised the bar in terms of the heating, cooling and ventilation of up-market interiors. Now the Ultra has been further updated and so even more meets customers' requirements in terms of design, comfort and convenience.

- Ziehl-Abegg sickle-blade, whisper quiet fan with fan characteristic curve aligned to the unit, permitting fan speed control by voltage reduction
- Driven by a single-phase or three-phase external rotor motor integrated in the hub of the fan
- Height only 330 mm
- Induction crown as standard
- Extended louvre for improved air direction
- Slats can be set in six precisely grooved positions
- Recirculating and mixed air units have the same appearance and height
- Lightweight as all parts of the housing are made of plastic
- Housing powdercoated RAL 9016 traffic white; can be painted (other colours available on request and at a surcharge)
- Especially lightweight circular heat exchanger produces high output from compact dimensions
- Suitable for use with low water temperatures
- Suitable for use with LPHW and LPCW up to a flow temperature of 120 °C and up to 10 bar continuous operating pressure



- ① Removable cover
- ② Cu/Al heat exchanger
- ③ Axial sickle-blade, whisper quiet fan
- ④ Plastic housing RAL 9016
- ⑤ Induction crown as standard

Technical data for heating or ventilating

Type	Fan stage	Fan speed approx rpm.	Max. mounting height H_{max} m	Throw W m	Noise pressure level LPA ¹⁾ [dB(A)]	Air volume m ³ /h	Heat output ²⁾ kW
73 _ _ 36	2	900	2.4	3,8	43	1180-1150	9.0-11.5
	1	700	2.3	3.2	38	890-880	7.4-9.4
84 _ _ 36	2	900	2.8	4.4	50	1650-1580	12.2-15.8
	1	700	2.6	3.8	44	1410-1350	10.3-14.0
85 _ _ 36	2	900	3.4	5.6	52	2860-2750	19.0-25.1
	1	700	3.0	4.7	45	2080-1990	15.4-20.0
96 _ _ 36	2	900	3.9	7.0	60	5130-4920	29.8-40.0
	1	700	3.5	5.5	50	3410-3270	23.1-30.4
96 _ _ 38	2	650	3.7	6.2	51	3670-3520	24.2-32.0
	1	500	3.3	5.2	44	2630-2520	19.5-25.3
97 _ _ 66	2	920	3.7	6.2	55	4090	35.4
	1	710	3.3	5.1	48	3060	29.0

¹⁾measured at a distance of 3m

²⁾at LPHW 75/65 °C $t_{l1} = 20$ °C

Correction factor for 82/71/20 °C = 1.14

TOP Unit heaters

- extensive range of accessories, now available ex-stock from your specialist wholesaler

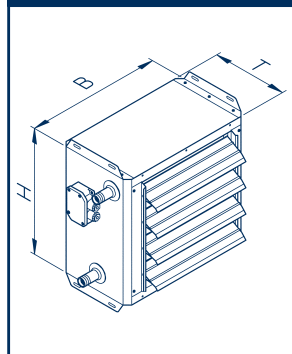
A wide range of models to meet every design need - "TOP" in terms of price and performance.

- Aerodynamic Ziehl-Abegg sickle-blade whisper-quiet cast-aluminium fan with optimised full nozzle
- Cu/Al heat exchanger suitable for use with LPHW/LPCW; max. flow temperature 120 °C, max. continuous operating pressure 16 bar
- Sendzimir galvanised housing that can also be painted
- A range of different louvres and diffusers
- 1-row louvre, fan guard and brackets included in the price



TOP Technical data with Cu/Al heat exchanger

Type	Dimensions [mm]			Conn. size [Inch]	Max. mounting height H_{max} m	Throw W m	Noise pressure level $L_{PA}^{1)}$ [dB(A)]	Air volume m^3/h	Heat output ²⁾ kW
	B	H	T						
44 __ 36	540	500	320	1	4.1-5.5	12-18	49-55	1480-2360	11.1-18.0
45 __ 36	640	600	320	1	5.0-6.5	13-23	51-59	2700-4140	17.7-30.9
46 __ 36	740	700	320	1 1/4	5.1-7.2	17-28	51-58	3720-5680	27.3-47.9
47 __ 36	840	800	360	1 1/2	6.5-8.0	22-38	57-61	6150-8770	43.4-77.2



TIP Unit heaters

- unbeatable in terms of price and performance ratio, Series 54, 55, 56 now available ex-stock from your specialist wholesaler

The cost-effective model with tried-and-tested Kampmann quality.

- Ziehl-Abegg sickle-blade whisper-quiet fans with optimised half-nozzle
- Cu/Al heat exchanger, max. flow temperature 120 °C, max. continuous operating pressure 16 bar
- A range of different louvres and diffusers
- With 2-stage three-phase motor
- Recirculating air
- DeWaTIP louvre included in the price



Technical data - TIP unit heaters

Type	Dimensions [mm]			Connection size [Inch]	Max. mounting height H_{max} m	Throw W m	Noise pressure level $L_{PA}^{1)}$ [dB(A)]	Air volume m^3/h	Heat output ²⁾ kW
	B	H	T						
54 __ 36	500	500	280	1	4.1-5.5	12-18	49-55	1480-2360	11.1-18.0
55 __ 36	600	600	280	1	5.0-6.5	13-23	51-59	2700-4140	17.7-30.9
56 __ 36	700	700	280	1 1/4	5.1-7.2	17-28	51-58	3720-5680	27.3-47.9
57 __ 36	800	800	280	1 1/2	6.5-8.0	22-38	57-61	6150-8770	43.4-77.2

¹⁾measured at a distance of 3 m

²⁾at LPHW 75/65 °C $t_{L1} = 20$ °C

Correction factor for 82/71/20 °C = 1.14

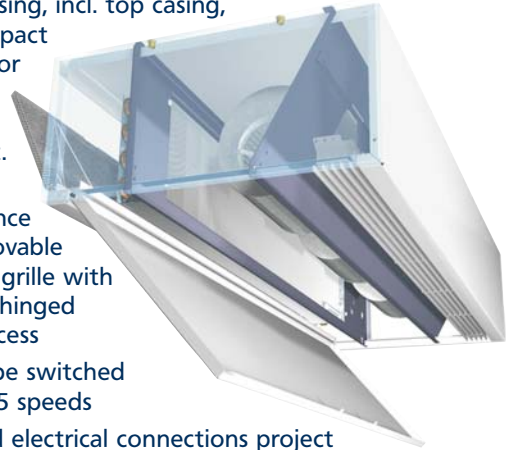


UniLine 260 Door air curtains

- universal and compact for all standard applications, now available ex-stock from your specialist wholesaler

Simple and easy to fit - low maintenance

Unit and casing, incl. top casing, form a compact unit; ideal for fitting in shops and retail outlet.



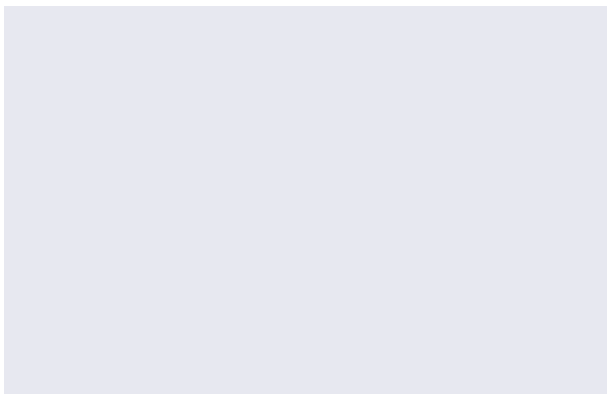
- Low-maintenance with removable induction grille with filter and hinged service access
- Fans can be switched between 5 speeds
- Water and electrical connections project out of casing on one side
- Filter can be replaced without the need for a tool
- Top of unit is sealed
- Lengths from 1.0 to 3.0 m
- Mounting heights from 2.3 to 3.0 m

Dimensions · Technical data

Model	Length	Height	Depth	Max. outlet height ¹⁾	Max. door width	Noise pressure level ⁴⁾	Air volume ²⁾	Heat output ³⁾
	B	H	T	m	m	dB(A)	m ³ /h	kW
10	1000	260	580	2.3 - 3.0	1.0	36 - 57	600 - 1390	6.7 - 10.2
15	1500	260	580	2.3 - 3.0	1.5	37 - 58	930 - 2130	9.6 - 17.4
20	2000	260	580	2.3 - 3.0	2.0	39 - 59	1210 - 2820	13.1 - 24.2
25	2500	260	580	2.3 - 3.0	2.5	40 - 60	1660 - 4000	18.0 - 33.9
30	3000	260	580	2.3 - 3.0	3.0	42 - 62	2210 - 5330	24.0 - 44.2

¹⁾with favourable to average pressure conditions/requirements; ²⁾five switching speeds; ³⁾at LPHW 75/65 °C t_{l1} = 20 °C; ⁴⁾measured at a distance of 3 m

Correction factor for 82/71/20 °C = 1.14



KAMPMANN

SYSTEMS FOR HEATING · COOLING · VENTILATING

KAMPMANN GMBH · Germany

Friedrich-Ebert-Straße 128 - 130 · 49811 Lingen (Ems)
Telefon: +49 591 7108-0 · Telefax +49 591 7108-300
info@kampmann.de · www.kampmann.de

**KAMPMANN GmbH
UK Office**

Dial House · Govett Avenue · Shepperton, Middlesex, TW17 8AG
Tel. +44 1932 228592 · Fax +44 1932 228949 · info@kampmann-uk.co.uk · www.kampmann-uk.co.uk

All rights reserved; our prior permission is required for any reprints, even for excerpts; subject to alterations; edition 270/12/07/75 GB